



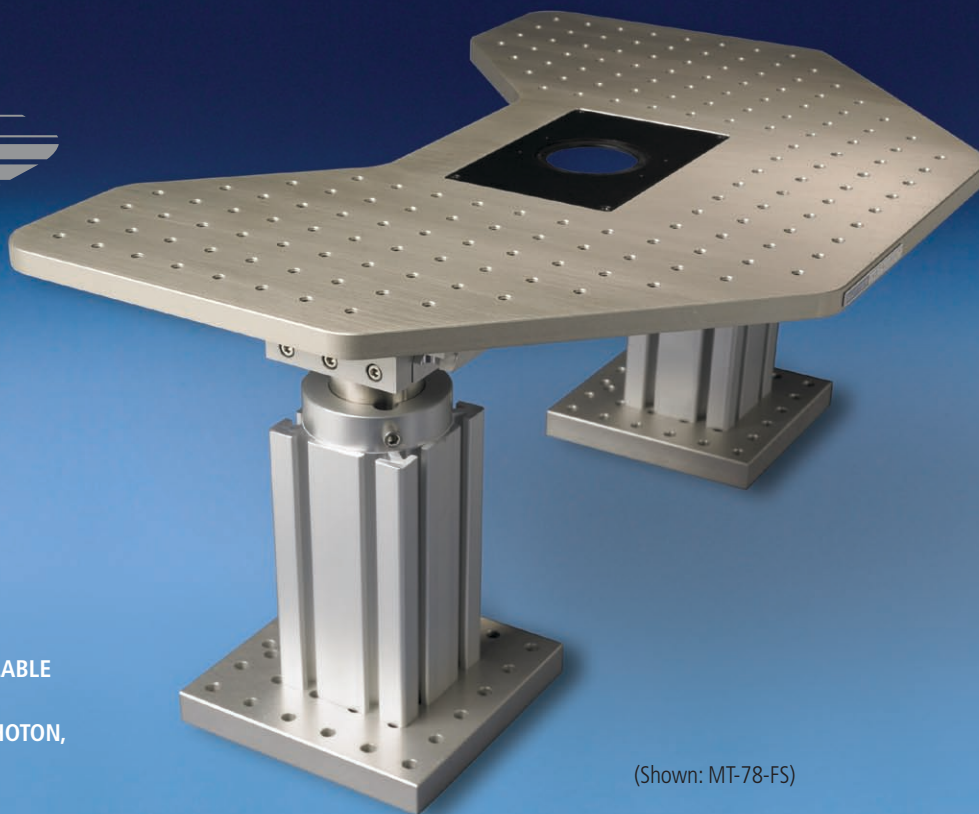
STABLE SUPPORT AND
SOLID DESIGN

ACCOMMODATES A VARIETY OF
STAGE INSERTS

COMPATIBLE WITH UPRIGHT AND
INVERTED MICROSCOPES

OPTIONAL XY TRANSLATION AVAILABLE

SUITABLE FOR MULTI-SITE, TWO-PHOTON,
ELECTROPHYSIOLOGY



(Shown: MT-78-FS)

MT-78/MT-78-FS MOVING & FIXED STAGE PLATFORM

Designed for experiments where a large single stage is dictated, the **MT-78** or **MT-78-FS** large-stage platforms provide solid, stable support and ample space to attach manipulators and other instruments as needed. The rigid aluminum top plate sits firmly on two of our well-known **MT-75** gantry-style stands. These stands provide height adjustment and sturdy attachment to the user's vibration table. Multiple degrees of freedom accommodate a variety of microscope and instrument arrangements.

The **MT-78** Moving Stage platform is available for patch slice or in vivo experiments where the microscope body cannot be moved to view different fields of view. This is most common in two-photon experiments where the excitation beam path must enter a fixed microscope. In order to visit wide-spaced fields of view, and potentially position pipettes at wide-spaced locations, the preparation and any associated manipulators must move together on a large stage. The **MT-78** was introduced at the 2007 Imaging Structure and Function in the Nervous System at Cold Spring Harbor Labs. The stage was very well received. The **MT-78** is also appropriate for use with inverted

microscopes or other scopes that are larger and not easily translated.

The **MT-78-FS**, Fixed Stage platform, paired with a Sutter Instrument XY translator (either the motorized **MT-800** or manual **MT-500**), offers a large, single-platform solution for researchers performing experiments requiring X-Y translation of the optical pathway in order to view multiple locations within the specimen at high resolution. Many prefer a large stage design as it lends itself to the easy addition of manipulators, perfusion systems and other equipment to the setup.

The cast aluminum top plate used in both the **MT-78** and **MT-78-FS** has an attractive shape with an extensive 1/4-20 threaded hole pattern on 1-inch centers. This hole pattern is appropriate for mounting Sutter **MP285** or **MP225** manipulator mechanicals using the mounting adapter plates that come with these devices. Optional rotating bases (285RBI) are also compatible and add flexibility. Finally, the new, **MP265/M** mechanical can be mounted on its narrow linear slide.

COMPONENTS

MT-78

Moving platform stage plate with motorized gantry supports, **MP-285** controller and ROE, cables and manual

MT-78-FS

Fixed platform stage plate and gantry supports

COMPLETE SYSTEMS

MT-1078

Includes the **MT-500** manual X-Y translator and **MT-78-FS** fixed stage platform

MT-2078

Includes the **MT-800** motorized X-Y translator, **MP-285** controller and ROE, **MT-78-FS** fixed stage platform, cables and manual

MT-2278

Includes the **MT-800** motorized X-Y translator, **MPC-200-ROE** controller and ROE, **MT-78-FS** fixed stage platform, cables and manual

SUTTER INSTRUMENT

One Digital Drive • Novato • CA 94949 • Phone 415.883.0128
Fax 415.883.0572 • Web www.sutter.com • Email info@sutter.com