

Axoclamp 900A microelectrode amplifier

A COMPUTER-CONTROLLED AMPLIFIER FOR CURRENT-CLAMP AND VOLTAGE-CLAMP APPLICATIONS

Axoclamp 900A 微电极电流钳和电压钳放大器



- NEXT-GENERATION
COMPUTER CONTROL
- EASY USB CONNECTION
- SUPERIOR QUALITY: LOW
NOISE, HIGH BANDWIDTH
- MULTIPLE MODES OF
OPERATION
- BUILT-IN OUTPUT GAIN AND
FILTER OPTIONS
- AUTOMATIC OSCILLATION
CORRECTION

The Axoclamp 900A is the newest microelectrode amplifier from Molecular Devices. Like the Axoclamp-2B amplifier, Axoclamp 900A offers several modes of operation that measure signals from single cells, tissue slices, and whole animal preparations. The advanced signal conditioning included in the Axoclamp 900A amplifier saves the expense of buying additional hardware and frees up valuable space in an electrophysiology setup.

By making Axoclamp 900A computer-controlled, several powerful new features have been added to make it simpler to set up and run experiments. This exciting new instrument is designed to meet researchers' needs today, as well as offer flexibility for future experiments.

SEVERAL MODES OF OPERATION

This versatile amplifier offers several modes of operation. Current clamp (I-Clamp), for measuring voltage responses, is available in

two channels with independent Bridge Balance and I=0 options. Discontinuous current clamp (DCC) is especially useful when small changes in electrode resistance occur during an experiment. Two-electrode voltage clamp (TEVC) uses two microelectrodes, one for continuous recording of electrode voltage and the other for injection of current.

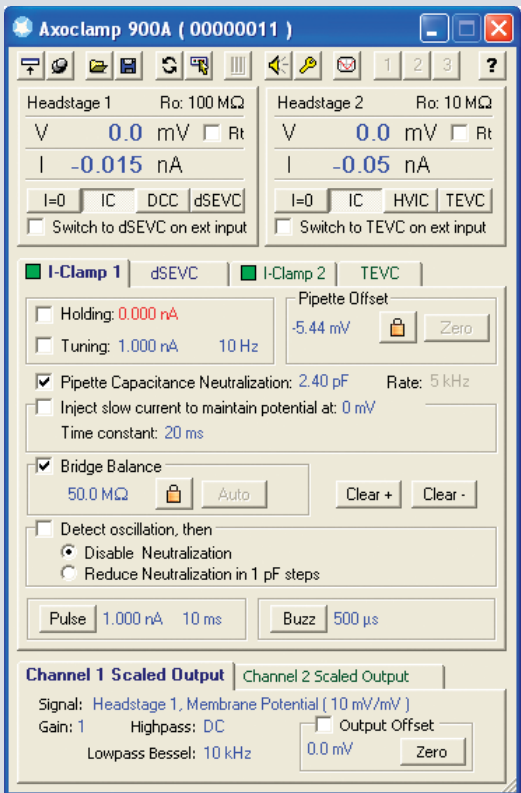
The high-output compliance of TEVC makes it possible to voltage clamp large rapid currents. Discontinuous single-electrode voltage clamp (dSEVC) is used to voltage clamp small cells that cannot tolerate impalement by a second electrode and eliminates problems due to the large series resistance inherent with many preparations. High-voltage current clamp (HVIC) is used primarily for extracellular iontophoresis applications.

马普科学仪器有限公司

Tel : 020-8767 9617 , 8767 9631 ; Fax : 020-8767 9635
<http://www.mapusci.com> E-mail: info@mapusci.com

computer or conventional controls

Axoclamp Commander software interface



The Axoclamp 900A amplifier is fully integrated with Axoclamp 900A Commander software. The figure to the left shows many of the features of the Axoclamp Commander interface, including the different modes available, controls for I-Clamp mode in Channel 1, and output signal conditioning controls. Although controlled by software, Axoclamp 900A uses customary analog inputs and outputs instead of a built-in digitizer. Thus, Axoclamp 900A can be used with any external digitizer and acquisition software package, including Molecular Devices Digidata[®] digitizers and pCLAMP data acquisition and analysis software. Using Axoclamp 900A with Digidata 1440A and pCLAMP 10 enables full telegraphing of Axoclamp 900A parameters.

SoftPanel conventional control



To offer a more conventional amplifier control, the optional SoftPanel was designed as a hardware extension of the Axoclamp Commander software. SoftPanel communicates with the computer via an easy-to-set-up USB 2.0 connection. Using SoftPanel does not negate the many benefits afforded by computer control of the amplifier.

ADVANTAGES OF COMPUTER CONTROL

Through computer control, the traditional knobs, dials, and buttons are no longer needed and are replaced by an intuitive software interface. Computer control provides several advantages over conventional amplifiers. It enables automation of several standard tasks such as adjustment of Pipette Offset, Bridge Balance, and Pipette Capacitance Neutralization.

Other added benefits include automatic oscillation detection and correction (in less than 2 ms), automatic mode-switching between I-Clamp and voltage clamp modes (TEVC, dSEVC), computer display of monitor signals used for tuning DCC and dSEVC modes, slow current injection in I-Clamp mode to

prevent small, slow drifts in the membrane voltage, the ability to save personalized settings, multiple signal selections for output from the two channels, and automated resistance measurement.

Full communication between third party software and the Axoclamp 900A amplifier is possible through the Axoclamp DLL. For those who prefer more conventional amplifier control, the optional SoftPanel can be used as a hardware extension of the Axoclamp 900A amplifier, without the loss of the benefits of computer control.

EXCELLENT AMPLIFIER PERFORMANCE

The ± 180 V output compliance used for TEVC and HVIC modes makes it possible to pass larger currents and ensures faster clamp speeds. TEVC and dSEVC modes both have wide AC Voltage-clamp gain ranges for excellent voltage control. When DC Restore is enabled, the DC Voltage-clamp gain is greater than 1,000,000, ensuring optimal voltage control for constant-voltage measurements. The new dSEVC design is more stable and twice as fast as Axoclamp-2B, providing an excellent alternative to standard continuous single-electrode voltage clamping.

马普科学仪器有限公司

Tel : 020-8767 9617 , 8767 9631 ; Fax : 020-8767 9635
<http://www.mapusci.com> E-mail: info@mapusci.com



integrated



automatic



flexible



better signal-to-noise ratio



better results

specifications

Technical Specifications

Scaled output:

Gain: 1–2000 in 1:2:5 sequence
 Highpass filter: Single-pole; DC–300 Hz
 Lowpass filter: 4-pole
 Bessel, 2 Hz to 30 kHz;
 Butterworth, 3 Hz to 45 kHz

Output (DC) offset: ± 3 V

Current output: 1 per channel
 Gain 10, 100, or 1000 nA/V[†]

Auxiliary Headstage: 1 per channel, gain 10 V/V

Maximum Current*						
		I-Clamp	HVIC	TEVC	dSEVC	DCC
Headstage	Ro	(Ch 1 & 2)	(Ch 2)	(Ch2)	(Ch1)	(Ch1)
HS-9A x0.1U	100 M	0.12 μ A	1.8 μ A	1.8 μ A	0.036 μ A	0.036 μ A
HS-9A x1U	10 M	1.20 μ A	18.0 μ A	18.0 μ A	0.360 μ A	0.360 μ A
HS-9A x10U	1 M	12.00 μ A	180.0 μ A	180.0 μ A	3.600 μ A	3.600 μ A

*Maximum current specifications assume negligible electrode resistance.

Pipette offset: ± 250 mV

Pipette capacitance neutralization: -10 to 35.5 pF
 (I-Clamp 1&2, DCC, dSEVC, TEVC
 Ch1 only)

Buzz: Increases capacitance 4 pF for duration of
 0.1–500 ms to break through tough cell
 membranes, activate within the software
 or remotely with a hand-held remote

Clear (\pm): Maximum positive or negative
 current—duration up to 0.5 sec. to
 clear debris from electrodes, decrease tip
 resistance before impaling cell

Bridge balance: 0 to maximum of 8, 80, or 800 M Ω [†]

Output compliance: ± 180 V for TEVC and HVIC,
 ± 12 V for I-Clamp 1 & 2, DCC, dSEVC

DC restore: DC Voltage-Clamp Gain, selectable
 ~1,000,000, TEVC & dSEVC

Step activate: Independent on channels 1 & 2,
 internal or external timing up to 50 kHz
 pulse amplitude/duration programmable

Blank activate: Used for blanking response to
 external stimuli, channel 1 only

Audio monitor: Direct Signal Monitoring or VCO
 mode to monitor voltage or current in
 either channel

Two jacks for headphones or powered
 speakers (not included)

Performance Specifications

I-CLAMP (Ch 1 & 2)

Internal holding level max.: ± 10 nA, ± 100 nA, or
 ± 1000 nA[†]

External command sensitivity: 1, 10, or 100 nA/V[†]

DCC (Ch 1)

Internal holding level max.: ± 10 nA, ± 100 nA, or
 ± 1000 nA[†]

External command sensitivity: 1, 10, or 100 nA/V[†]

HVIC (Ch 2)

Internal holding level max.: ± 0.13 , $+1.3$, or 13.0 μ A[†]

External command sensitivity: 10, 100, or 1000 nA/V[†]

dSEVC (Ch 1)

Internal holding level: ± 200 mV

AC voltage-clamp gain: 0.003–30 nA/mV,
 0.03–300 nA/mV, or 0.3–3000 nA/mV[†]

External command sensitivity: 20 mV/V

Voltage rise time^a: 250 μ s

Current settling time^a: 500 μ s to 10% of peak
 value

Voltage noise^a: 180 μ V rms

Current noise^a: 0.30 nA rms

a: Model cell with two 50 M Ω resistors to simulate electrode
 resistances and a 50 M Ω resistor and 470 pF capacitor in parallel
 to simulate the cell membrane. 10 mV step. Lowpass filter, 10
 kHz. Voltage-Clamp Gain, 2.2 nA/mV; Lag, minimum. Sample
 rate, 20 kHz. Pipette Capacitance Neutralization, 1.5 pF. Set for
 flattest membrane step response. HS-9A x0.1U headstage.

TEVC (Ch 1 & 2 together)

Internal holding level: ± 200 mV

AC voltage-clamp gain: 20 to 50,000

Voltage-clamp lag: 5.4 μ s–52 ms

External command sensitivity: 20 mV/V

Voltage rise time^b: 60 μ s

Current settling time^b: 80 μ s to 10% of peak
 value

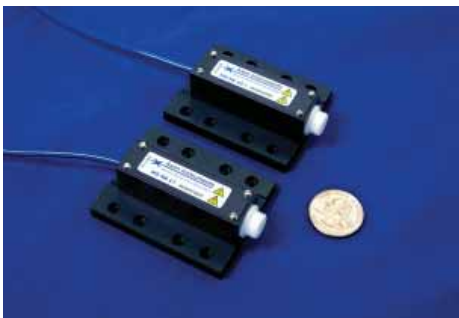
Voltage noise^b: 23 μ V rms

Current noise^b: 70 nA rms

b: Model cell with two 1 M Ω resistors to simulate electrode
 resistances and a 1 M Ω resistor and 220 nF capacitor in parallel to
 simulate the oocyte membrane. Lowpass filter, 10 kHz. Voltage-
 clamp Gain, 9300. Lag, 0.019 ms Adjusted for fastest rise time.
 HS-9A x1U headstage for voltage electrode and HS-9A x10U for
 current electrode.

[†] Depending on headstage.

headstage with baseplate



The small profile of the miniaturized HS-9A and VG-9A
 headstages makes it easy to incorporate them into an
 electrophysiology set up. The dovetail design integrates with
 a baseplate for easy attachment to micromanipulators.

马普科学仪器有限公司

Tel : 020-8767 9617 , 8767 9631 ; Fax : 020-8767 9635

http://www.mapusci.com E-mail: info@mapusci.com

General Specifications

Dimensions (in.):	4.3 (H) x 19 (W) x 14.3 (D)
Dimensions (cm):	10.9 (H) x 48.3 (W) x 36.3 (D)
Weight (lbs.):	9.5 (4.3 kg)
Headstage (in.):	0.75 (H) x 0.70 (W) x 2.25 (D)
Headstage (cm):	1.9 (H) x 1.8 (W) x 5.7 (D)
Communications:	(3) USB 2.0 Type B female ports <ul style="list-style-type: none"> → One for amplifier control → One for monitor signal computer display for discontinuous modes → One for optional SoftPanel control
Rack use:	Standard 19" rack-mount (2U) with handles
Benchtop use:	Bayonet feet
Power:	100–240 V _{AC} 50–60 Hz, 30 watts (max.)
Safety:	CE marking (Conformité Européen)
Computer:	1 GHz or better processor, Windows® 2000/XP, CD-ROM drive 512 MB RAM, 500 MB HD space
Software:	Axoclamp 900A Commander (included)

ORDERING INFORMATION

Axoclamp 900A Microelectrode Amplifier*
Part Number: AXOCLAMP 900A
→ Axoclamp 900A instrument
→ (1) Remote BUZZ Box
→ (1) Clamp-1U Model Cell
→ (2) HL-U electrode holders
→ (1) Axoclamp 900A Commander software CD
→ (2) USB cables
→ (2) Headstage baseplates
→ Theory and Operation user guide (printed)

* Two HS-9A headstages must be ordered with the Axoclamp 900A instrument.

OPTIONAL ACCESSORIES

SoftPanel Controller
Part Number: 1-SOFTPANEL
MCO-2U Model Cell
Part Number: 1-MCO-2U

Headstage options:

- HS-9A x0.1U
- HS-9A x1U
- HS-9A x10U
- VG-9A x10
- VG-9A x100

马普科学仪器有限公司

Tel : 020-8767 9617 , 8767 9631 ; Fax : 020-8767 9635
<http://www.mapusci.com> E-mail: info@mapusci.com