

## FILAMENTS/ACCESSORIES

## 拉制仪加热片



**There is a minimum purchase of 4 filaments.**

Appropriate filament selection depends on your research application, but a general guideline for filaments is as follows:

**Box Filaments** are recommended for large diameter, double barreled, or aluminosilicate glass. Box filaments are particularly suitable for slice preparations where long, parallel walls would aid penetration. When using a box filament, the size of the square box should be approximately 1.0mm to 1.5mm larger than the outside diameter of the glass that you will be using.

For IVF and ICSI applications, a 2.5mm x 4.5mm box filament (FB245B) is recommended. For pronuclear injection work, we recommend a 2.5mm x 2.5mm box filament (FB255B).

Call for more specific advice or to request a combination of settings, filaments, and glass for your application.

**Trough Filaments** are excellent general purpose filaments and are recommended for patch pipettes produced from either standard or thin wall glass. If very short tapers are required for patch or microinjection, a 2.5mm or 3mm box filament is recommended.

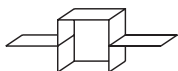
*Sutter pre-programs the **P-97** with a 2.5mm x 2.5mm box filament unless an alternative filament is requested.*

For either type of filament, increasing the filament width tends to increase the length of the pipette taper. If there are specific questions as to the filament type needed, please call and our technical support staff will guide you in your choice.

马普科学仪器有限公司

Tel: 020-8767 9617, 8767 9631; Fax: 020-8767 9635

<http://www.mapusci.com> E-mail: [info@mapusci.com](mailto:info@mapusci.com)



## BOX FILAMENTS

P-97, P-87, P80PC, P80C, PC-84, P-77B

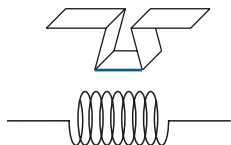
- FB215B** 2.0mm square box filament, 1.5mm wide
- FB220B** 2.0mm square box filament, 2.0mm wide
- FB230B** 2.0mm square box filament, 3.0mm wide
- FB255B** 2.5mm square box filament, 2.5mm wide
- FB245B** 2.5mm square box filament, 4.5mm wide
- FB315B** 3.0mm square box filament, 1.5mm wide
- FB320B** 3.0mm square box filament, 2.0mm wide
- FB330B** 3.0mm square box filament, 3.0mm wide



## TROUGH FILAMENTS

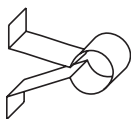
P-97, P-87, P80PC, P80C, PC-84, P-77B

- FT315B** 1.5mm wide trough filament
- FT320B** 2.0mm wide trough filament
- FT330B** 3.0mm wide trough filament
- FT345B** 4.5mm wide trough filament



## P-30 FILAMENTS

- P30T15** 1.5mm wide trough filament
- P30T20** 2.0mm wide trough filament
- P30T30** 3.0mm wide trough filament
- P30N** Nichrome filament



## P-77A LOOP FILAMENTS

(Serial number 160 and above)

- FL315A** 3.0mm loop filament, 1.5mm wide
  - FL320A** 3.0mm loop filament, 2.0mm wide
  - FL325A** 3.0mm loop filament, 2.5mm wide
- (Serial number below 160)
- FL315X** 3.0mm loop filament, 1.5mm wide
  - FL320X** 3.0mm loop filament, 2.0mm wide
  - FL325X** 3.0mm loop filament, 2.5mm wide

## ACCESSORIES

- FILAMENT** Custom platinum/iridium filament
- FPS** Fire polishing spacer for P-2000, P-97, and P-87 pullers
- FS1875** Platinum/iridium sheet, 18mm x 75mm x 0.05mm (40μ)
- CTS** Ceramic tile for scoring glass (large tips 20-200 microns)
- BX10** Pipette storage box\* (holds 10)  
4 3/4 x 3 5/8 x 3/4 inches
- BX20** Pipette storage box\* (holds 20)  
7 x 3 5/8 x 3/4 inches

*\*Minimum order of any 2 boxes*

马普科学仪器有限公司

Tel: 020-8767 9617, 8767 9631; Fax: 020-8767 9635  
<http://www.mapusci.com> E-mail: info@mapusci.com